

DSL TECH



德士隆机器 C-166 多功能双头振动刀切割机
HIGH PRODUCTION CUTTING MACHINE

DSL **TECH**

—源自意大利技术核心
行业领先的工业4.0切割方案

WORLDWIDE LEADER IN
AUTOMATION 4.0 CUTTING TECHNOLOGY



切割效果
CUTTING RESULTS



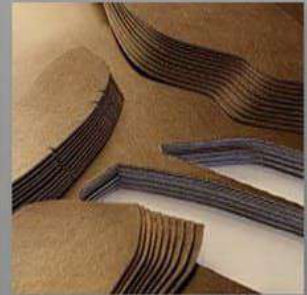
海绵类 SPONGE



塑料片 PLASTIC



中底板 MIDDLE SOLE



人造革 PU LEATHER

A large industrial automatic cutting machine, the DSL TECH C-166, is shown in a dark, industrial setting. The machine is complex, with multiple cutting heads and a large bed. The brand name and model are prominently displayed on the top panel. Safety icons are visible on the left side of the machine's upper structure.

DSL TECH C-166
AUTOMATIC CUTTING SYSTEM

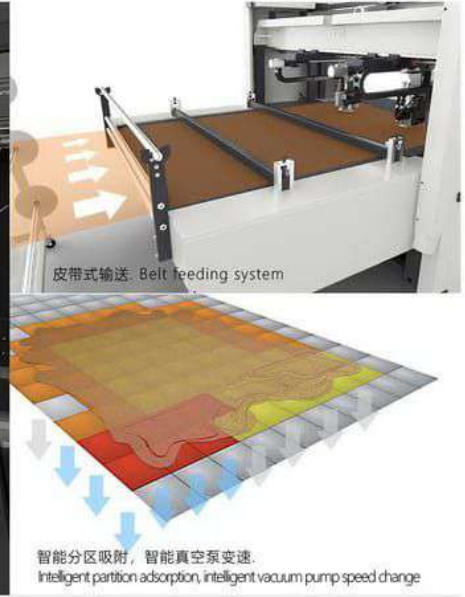
「您可信赖」的伙伴

专注皮革行业30年
中国鞋机行业标准制定者

THIRTY YEARS OF AFTER-SALES SERVICE
CHINESE SHOE MACHINE STANDARD SETTER

意大利沙巴集团合作
掌握意大利核心技术

DSL-TECH COLLABORATES WITH ITALY SABAL SPA
CHINA'S LARGEST SHOEMACHINE MANUFACTURER



- 📍 **双头异步刀头**
悬空设计 边切边收料
- 📍 **数据互连**
实时数据传输 产量看板
- 📍 **实时投影轮廓**
高分辨率 覆盖切割与收料区
- 📍 **简单操作**
人性化中文操作系统 降低操作门槛
- 📍 **无格式限制**
兼容性强 识别通用文件格式

- 📍 **高精度切割**
精度高达0.50mm±
- 📍 **一键自动排版**
先进的高密度算法
- 📍 **超省电**
智能分区吸附/智能变速真空泵
- 📍 **超静音**
实测分贝≤75dB
- 📍 **视觉改刀系统**
可升级视觉模块自动识别轮廓

- 📍 **Double independence moving tool bit.** Cutting and collecting material at the same time
- 📍 **Double projection.** With high resolution, the projection covers the area of cutting and collecting material
- 📍 **It is easy to use.** Humanized English operating system
- 📍 **Without format limit.** It has strong compatibility to identify all image files on the market
- 📍 **With high precision multilayer cutting.** Its cutting precision up to 0.50mm ±
- 📍 **Automatic typesetting with one button.** It has arithmetic with high efficiency and density
- 📍 **Super power saving.** Intelligent partition adsorption, intelligent vacuum pump speed change
- 📍 **Super silent.** Working decibel ≤75 dB, No waste gas pollution
- 📍 **Recognition technology of material outline.** It can cut irregular material optionally



运动鞋 SPORT SHOES



箱包 LEATHER BAG



沙发 SOFA



手套 GLOVES



智能裁切技术的革新

INNOVATION IN CUTTING TECHNOLOGY

“边口光滑，没有激光灼烧的焦黄臭
多层叠料，切割冲孔多层无倒塌变形
代替刀模，节约仓储成本与管理费用
刀模云储存，数据永不丢失保密性高
员工易上手，操作简单解决招工难

开发&生产
物联网
INTERNET OF THINGS



帮助企业提高产品质量与效率
升级数字化转型，标准化管理
节约材料成本，减少对技术工
种的依赖

The system can help enterprises to improve
product quality and efficiency, upgrade
standardized management, and reduce
enterprises' dependence on skilled workers



开发部电脑开板
CAD



裁断切割机
Cutting machine



电脑花样车
Computer sewing
machine



智能成型线
Intelligent molding



开发部小型切割机
Small machine for
cutting samples



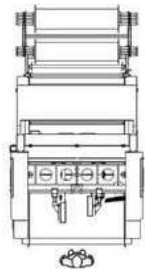
算用量软件
Software for calculating
material usage



物料报表
BOM

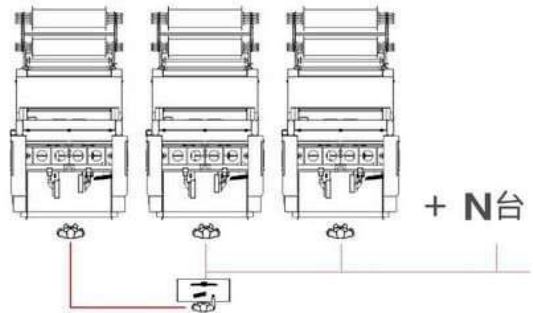
操作模式
OPERATING MODE

A 单机模式 SINGLE MACHINE MODE



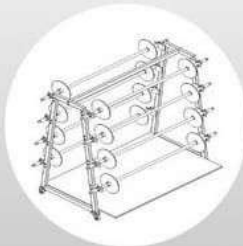
单人排版与切割
Single person typesetting, single person cutting

B 批量模式 MULTIPLE MACHINE MODE
(使用智能排版服务器)

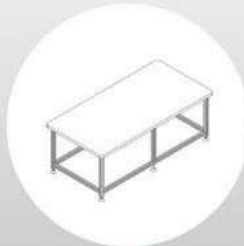


组长负责智能服务器排版，并布置多人切割
Single person typesetting, multiple people cutting

辅助配置
OPTINAL DEVICE



滚筒架*8杆*标配
Shelf*8rods



置物桌*选配
Table*optional



视觉识别设备*选配
Visual recognition equipment*optinal



数字化看板*选配
Digital Product Monitor*optional

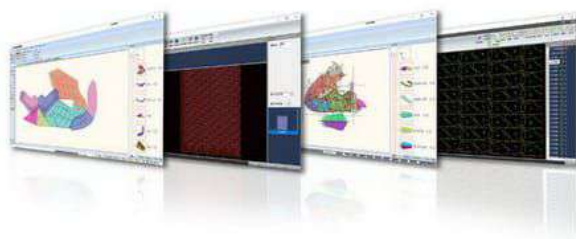
一键排版, 轻松上手

1. 自动识别裁片码数、名称、线、孔
2. 自动生成号码牙, 自动修复轮廓光顺
3. 一键自动排版, 可预设模式与规则

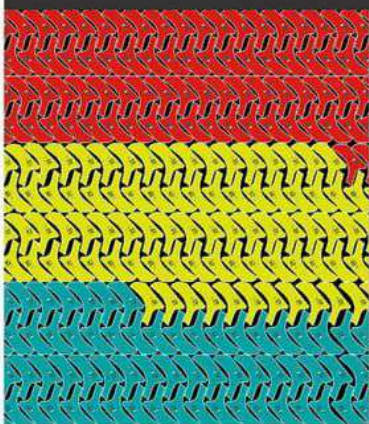
高配置, 多选择

1. 支持手动排版, 可组合部件阵列复制
2. 支持自动接料、自动对刀、小部件混插
3. 智能排版服务器可多台机器共享数据
4. 智能排版服务器 *需另购
5. 专业版高级算法模块 *需另购
6. 视觉识别外轮廓模块 *需另购

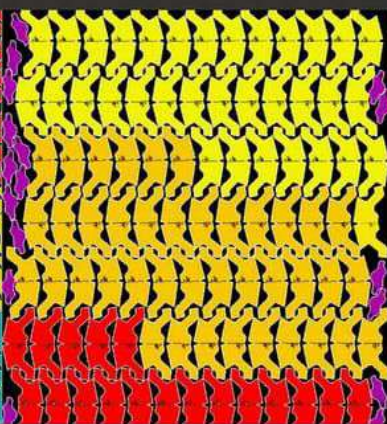
“智能排版服务器
高效布局 事半功倍



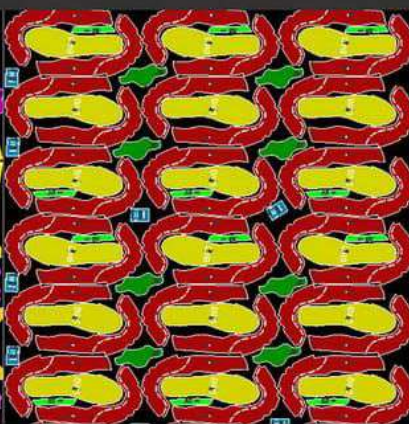
自动接料、对刀



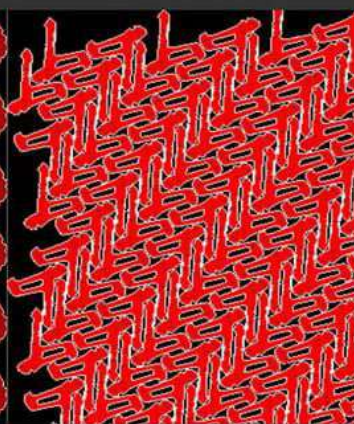
小部件混插



组合排版



梯形排料 (专业版)





国际品牌供应商

德士隆坚持选择最专业的国际品牌作为合作商，供应电器与气动类核心零部件，以保障机器运行的稳定与安全性。

BRANDED SUPPLIERS

Ensuring all our machines run smoothly and safely, DSL carefully selected core parts from top-notch suppliers of electronics and pneumatics.



精密制造

德士隆切割平台均采用铸造工艺并使用大型百万级数控铣床一次加工成型，保障平台高度保持在误差 $0.10 \pm \text{mm}$ 。

PRECISION MANUFACTURING

The DSL cutting platform is made by casting technology. After that, DSL uses a large milling machine to mill out any unevenness on the platform and flatten the surface with an error of $\pm 0.1 \text{ mm}$.



模组安装

德士隆均采用模组化装配模式，专人负责精密部件调试，安装工序精细标准化，提高工作稳定性，显著缩短交付机器的周期。

MODULIZED INSTALLATION

DSL use modularized installation to manufacture. Professionals will be responsible for the trialling and tuning of the precision parts. By standardizing the installation process, DSL can significantly shorten the waiting period for delivery.



适应材料
多层规则卷料/皮革/超纤/网布

切割厚度
海绵材料 ≤35mm
柔性材料 ≤15mm
硬性材料 ≤8mm

刀头振动频率
13000转

切割工具
电动/气动振动刀
打孔冲头
记号画笔
记号针

兼容格式
DXF/AI/PLT

排版方式
自动排版/自动识别孔与内线

传动系统
高精度丝杆 / 伺服电机

切割速度
1-900mm/s

噪音标准
分贝 ≤75dB

机器尺寸 Machine size
2900mm x 2300mm x 1900mm

切割区域 Cutting range
600mm x 1600mm (长宽LW)

工作气压 Pneumatic
7-8 Bar

总功率 power
11.6 Kw

机器电压 Voltage
380VAC 50Hz

重量 weight
1950 Kg

Acceptable material
Multilayer regular roll material, Leather, Fiber, Mesh, etc.

The thickness of the cutting
thickness of sponged material ≤35mm
thickness of soft material ≤15mm
thickness of hard material ≤8mm

The frequency of vibrational cutter head
13000 RPM

Cutting tools
electric vibrating knife
pneumatic vibrating knife
marking brush
marking needle
punch

Compatible format
DXF / AI / PLT

